



CAPABILITY STATEMENT

ABOUT US

Pacific Flow Engineering (PFE) is a trusted leader in the provision of engineering, procurement and construction services to fixed plant and SMP projects in the mining and industrial sectors across Australia.

Leveraging our specialist knowledge, skill, manufacturing capability and extensive supply network, we offer end-to-end solutions encompassing design, supply, installation and maintenance of pumps, pipes, valves, structural steel, plateworks and wear-resistant products.

Our commitment to excellence and efficiency underpins how we operate, from ensuring our clients receive quotes, proposals and information promptly to delivering projects on time and on budget, without compromising quality.

This dedication, combined with our team of skilled and qualified engineers, has resulted in numerous long-term partnerships with tier 1 operators.



HEALTH, SAFETY, ENVIRONMENT & QUALITY

We adhere to stringent health, safety, environment and quality standards and implement robust control measures to maintain this level of responsibility across all areas of the business.

Our commitment to quality is evident in the reliability, durability and performance of our products and workmanship.

Our offshore manufacturing facility is ISO9001 certified for quality management, ISO14001 certified for environmental management, ISO45001 certified for safety management and API Q1 (Quality Management for Manufacturing Organisations for the Petroleum and Natural Gas Industry) certified.



ENGINEERING DESIGN SERVICES

Our team of in-house structural engineers offer decades of experience and utilise state-of-the-art methodologies and technologies to deliver accurate engineering design services.

Our engineering capabilities include:

- Mining, resources and energy
- Transport and logistics
- Manufacturing
- Engineering



INSTALLATION AND MAINTENANCE SERVICES

Supported by our specialist installation partner, PPS Servicing, our full scope solutions encompass construction, installation, maintenance and shutdown services.

With over 20 years of experience and a 100+ strong qualified workforce, PPS Servicing has forged a reputation for delivering projects safely and to industry-leading standards.

Our fully integrated after sales service and maintenance plans minimise downtime and ensure assets continue to perform at their optimum.



MANUFACTURING CAPABILITIES

Our key value-add is our inhouse manufacturing capability which facilitates complete control over specifications and lead times, offering our clients a significant advantage.

Through our large ISO9001-certified Chinese facility, we produce the following products.

Pipes

- Rubber lined pipes
- PU lined pipes
- Ceramic lined pipes
- SiC lined pipes
- Epoxy lined pipes
- Hose systems

Pumps

- Water pumps
- Sump pumps
- Slurry pumps

Moulded Panels

- Rubber-ceramic composite panels
- Rubber panels
- PU panels

Plateworks

- Design and manufacture of bins, hoppers and chutes
- Material flow analysis by EDEM

Wear resistant products

- Metal wear-resistant plates

Structural Steels

- Project management
- Shop detailing by licenced Tekla
- Steel fabrication

Valves

- Diverse valve solutions

We also source and supply products from top tier global manufacturers.

SIEMENS

HAMMELMANN®

VOITH



TIMKEN

TECO



SKF



rexroth
A Bosch Company



SELECT EXPERIENCE

Structural design verification and supply and installation of parts for tier 1 iron ore project

PFE was engaged to conduct structural design verification and to supply and install parts at a major iron ore project in WA. The structural design verification using SpaceGass involved creating detailed models, inputting all relevant loads, calculating and generating comprehensive reports, ensuring the robustness and compliance of the structural designs and addressing any findings.

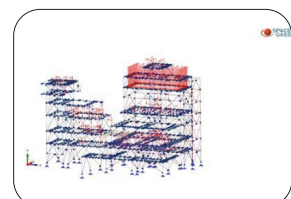
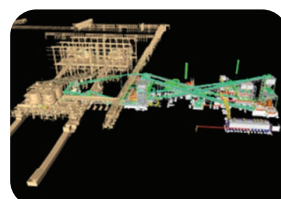
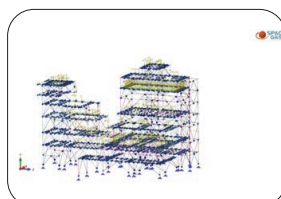
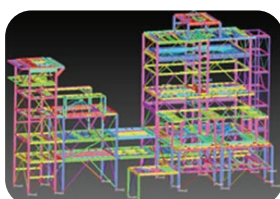
Key milestones included:

- March 2022 – project commenced
- August 2022 – fabrication and modules assembly started
- September 2022 – first dispatch
- October 2022 – first arrival
- April 2023 – last dispatch
- May 2024 – project commissioning



Parts supplied and installed included:

Parts supplied	Quantity
Plateworks	550T
Chimney and dust collecting pipe	210T
Handrails	118T
Steel floor grating	92T
Checker plates	139T
Module assembling	80 (off)



SELECT EXPERIENCE

Supply and installation of structural steel for KML

Our scope of works included the supply and installation of structural steel for a new filter press shed at a major iron ore mining operation in WA.

Key milestones included:

- October 2021 – tender award
- November 2021 – commencement of shop detailing
- December 2021 – completion of shop detailing
- February 2022 – first dispatch
- March 2022 – second dispatch

Parts supplied and installed included:

Parts supplied	Quantity
Structural steel	970T
Handrail with kickplate	1750m
Steel floor grating	3000m ²
Total bundles	115 bundles



Supply and installation of parts for major iron ore project

The project scope included the supply and installation of process water pumps at a large-scale iron ore mining operation in WA.



Flow: 10,057 m³/h

Head: 79m

Power: 2200kW

Rpm: 740

Key milestones included: Over 30% reduction in spare parts was achieved post installation.

Flow: 3,500 m³/h

Head: 180m

Power: 2200kW

Rpm: 1480

Key milestones included: The installation enabled water from dewatering plant to be pumped back to a concentrate process water dam 30km away.





📍 Suite 5, 642 Albany Highway,
Victoria Park WA 6100

☎ 08 6111 5901

✉ sales@pacificflow.com.au

🌐 pacificflow.com.au